

## NBN Atlas – Spatial Portal: Area of Occupancy (AOO) & Extent of Occurrence (EOO)

-AOO and EOO are measures developed by IUCN to assess the distribution of a species.

-EOO is calculated by drawing the shortest possible perimeter which encompasses all records in an area. It does not take into account any uninhabited areas within, or movement within that area during migration.

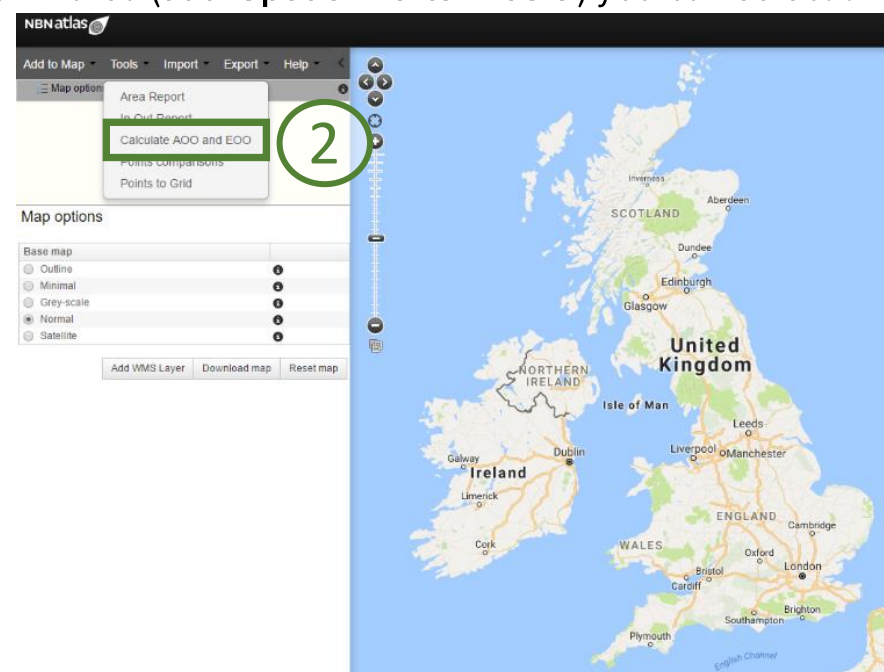
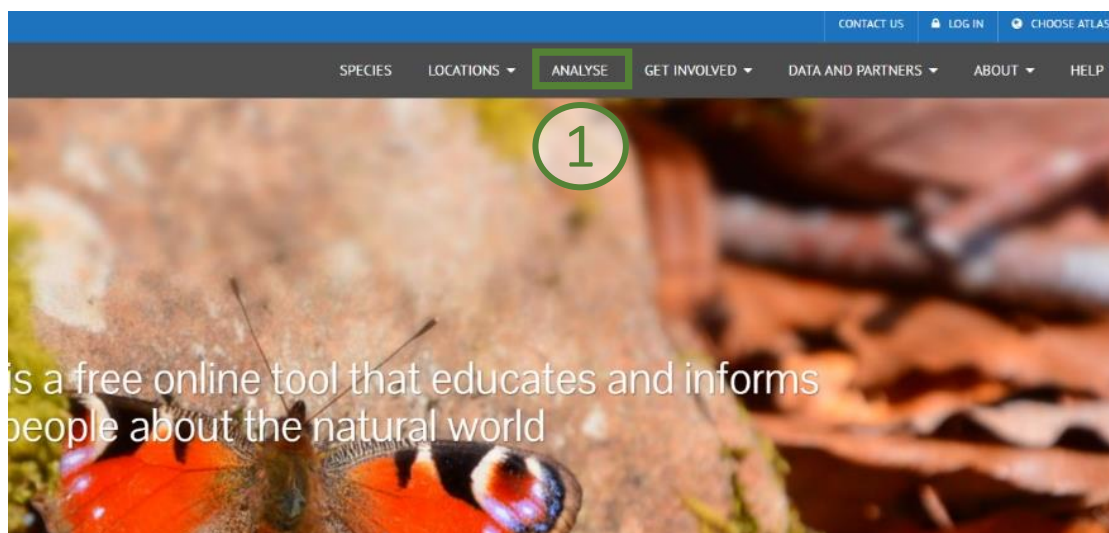
-AOO describes the smallest possible area required to support the population based on the species records available. It will be smaller than the EOO, as it accounts for the fact that individuals will move around within areas and may not be spread through the entire measured area.

To learn more about AOO & EOO, please visit <http://www.ala.org.au/spatial-portal-help/aoo/>

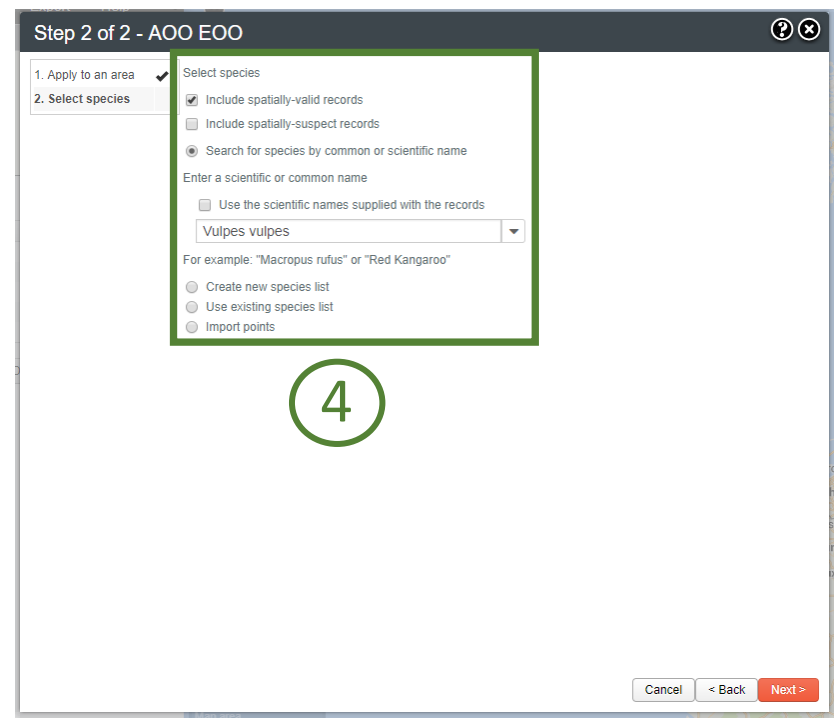
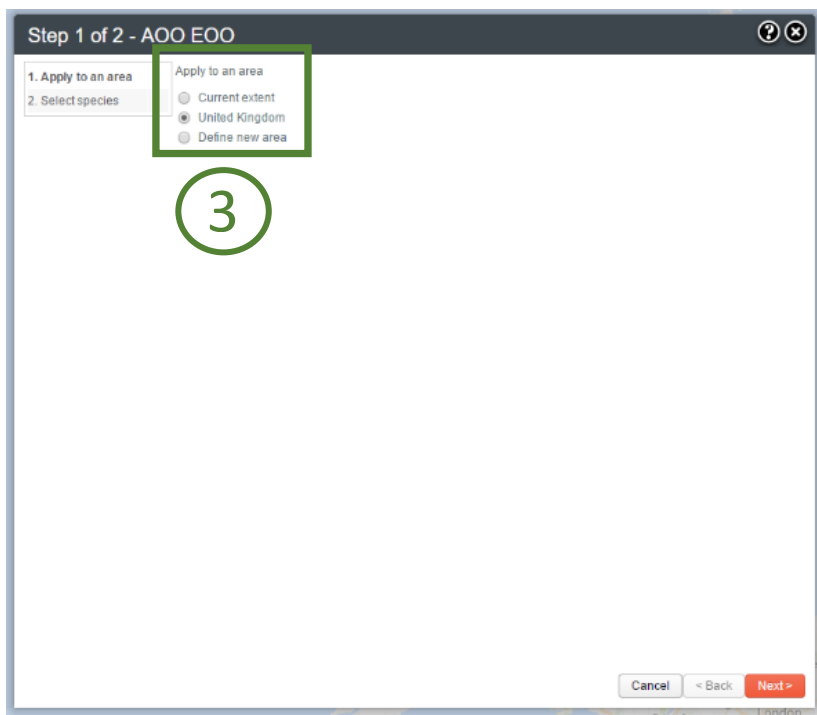
- To calculate AOO & EOO, navigate to the Spatial Portal by clicking ‘analyse’ from the NBN Atlas homescreen.

-From the Spatial Portal, click ‘Tools’, then ‘Calculate AOO and EOO’.

-Select the area you would like to analyse (3). If you have defined your own area (see ‘Spatial Portal Basic’) you can select this. Click ‘Next’ to proceed.



-Select the species you would like to analyse. Any species already present on the map will be listed here. You can search for a species using the search bar, or import a species list. Click ‘Next’ to proceed.



-You will be prompted to download the AOO & EOO values (5). They will also be downloaded as a .txt file.

